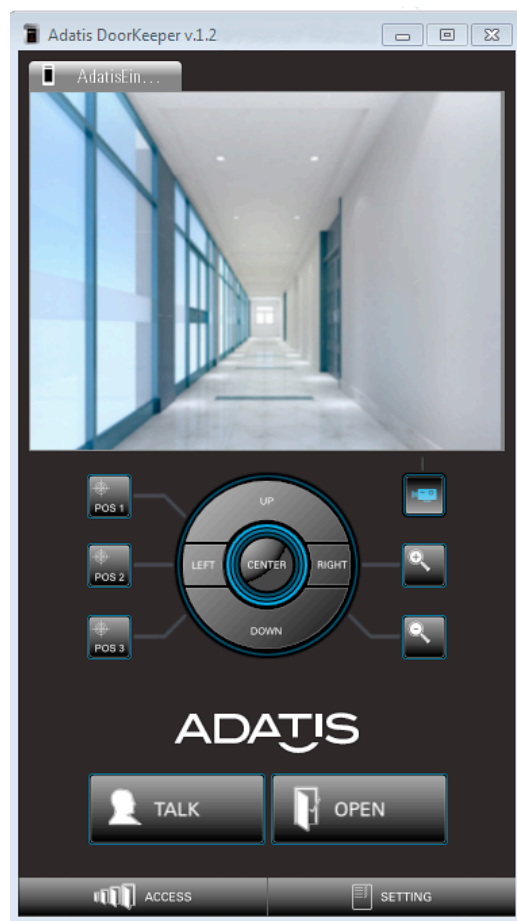


Manual DoorKeeper

Door communication and access control

SIP application for PC



About this manual

Thank you for choosing a quality product from the company Adatis.

This product is manufactured with modern manufacturing techniques and extensive quality assurance measures.

We are trying to do everything to make you happy with this device and that you can easily work with it.

If you have questions about your device, please contact your sales representative or contact us directly.

Adatis is constantly working on the development of all devices and versions, Therefore we reserve changes in the scope of delivery form, technology and equipment.

From any text and illustrations of this manual no claims can be derived.

Table of contents

1. About this product	4
Features	4
Functional overview	5
2. Installing DoorKeeper	6
Installation via link	6
Installation via CD	6
3. DoorKeeper for door surveillance	7
Basic settings	7
Access list	7
Selection of the door	7
Active connection	8
Operating elements	8
upper screen area	8
center screen area	9
lower screen area	10
Settings	10
4. DoorKeeper as remote station	13
Incoming call from door terminal	13
Door opening without call answering	13
Door opening with call answering	13
Terminate connection	14
Call from DoorKeeper at the door terminal	14
Display at the door terminal	14
5. License	15
6. Shortcuts	16
7. Deinstallation	17

1. About this product

The Adatis DoorKeeper is an easy-to-use application designed specifically for visitor communication and access control. With DoorKeeper, any number of doors equipped with Adatis door terminals can be remotely controlled from any location via the network.

The user interface allows intuitive control with various adjustment options and a compact window size.

The application can be installed on any PC and is also available as an app for iOS and Android.

1.1. Features

Any number of entrances: With DoorKeeper you decide how many doors you want to observe, the number is unlimited.

Watch-before-open operation: By transmitting the video signals, the situation in front of the door can be detected even before you establish a voice connection to the door and this is evident at the door.

SIP video: Support for SIP video with the H. 264 compression standard efficiently encodes video data, minimizing the traffic on your network.

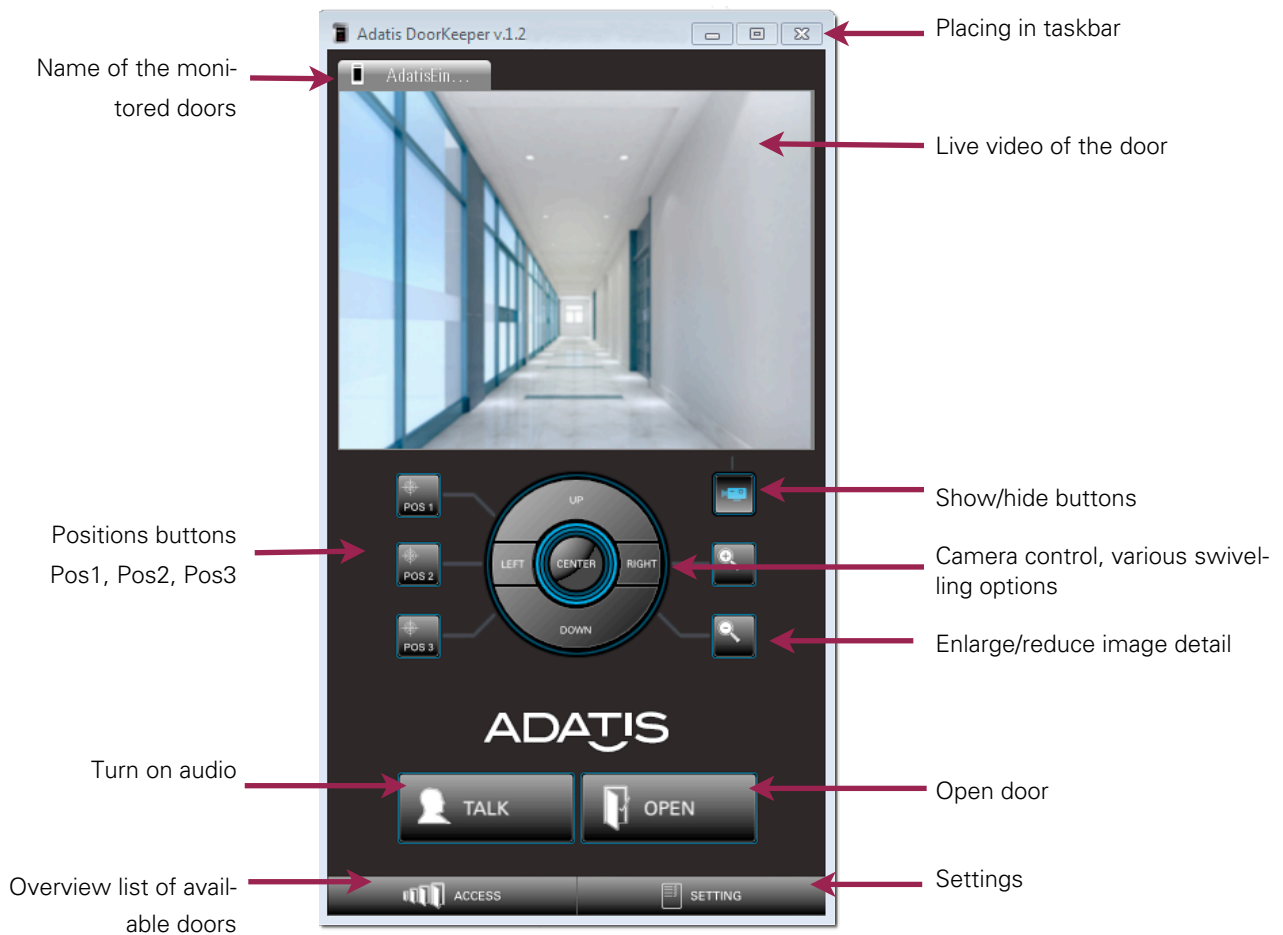
Autodetection: DoorKeeper automatically and independently detects which doors in the network are equipped with Adatis FaceEntry® or TouchEntry® and can therefore be controlled.

Team function: Up to 10 users can monitor each door through the simultaneous viewing of video signals. This ensures that communication is possible for every door, even when individual employees are absent.

Camera control: The camera with pan, tilt and zoom functions can be remotely controlled via DoorKeeper. This means that the fixed positions set in the door station can be called up, but also modified manually at any time.

Installation: DoorKeeper does not require a SIP server and is therefore very easy to install and set up.

1.2. Functional overview



2. Installing DoorKeeper

2.1. Installation via link

To install the software, open the link. The Setup Wizard is started, which guides you through the further installation.

If you want to change the default location of the file, you can select the appropriate path here. If desired, a desktop icon can also be created and the "Autostart" function activated. This causes the application to start automatically in minimized state each time the system is started.

In addition, 3 additional services will be installed: "Bonjour" and "Bonjour Print Services" to automatically detect the devices in the network, and "Redistributable Package" from Microsoft, which is used by the software.

2.2. Installation via CD

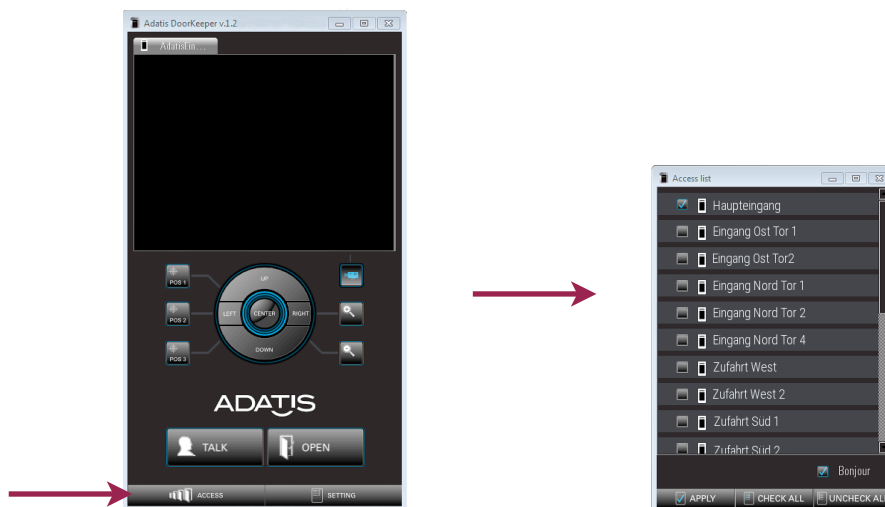
To install the software, start the setup.exe file on the CD. Then the Setup Wizard will also open, which guides you through the further installation as described above.

3. DoorKeeper for door surveillance

3.1. Basic settings

3.1.1. Access list

The first time the application is started, the main window is displayed. A further window can be opened via the button "Access" in the lower left corner: the access list. It displays the active devices in the network.



The displayed names are sent by the individual devices. They can be changed in the corresponding menu of the devices.

3.1.2. Selection of the door

Any number of devices can be selected from the displayed devices. If you want to select or deselect all devices, this is especially easy with the buttons "CHECK ALL" and "UNCHECK ALL".



The "APPLY" button confirms the settings.

A connection to the door can only be displayed with marked devices.

The same applies: If you no longer want to receive calls, no device may be selected.

3.1.3. Active connection



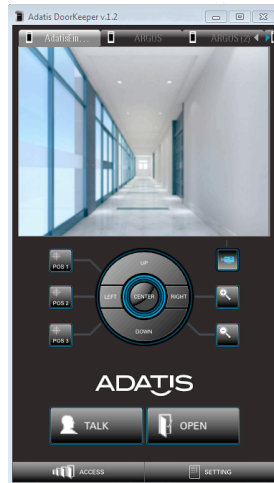
For all marked devices a new tab with the name of the monitored door opens in the main window in the upper left corner.

If you select the tab, a video connection is established automatically. This makes it possible to see what is happening in front of the door without this being visible on the device.

Up to 10 users can simultaneously receive the video live stream from the same door. To do this, they must have opened the application and the corresponding tab of this door. Only active DoorKeepers count in relation to the maximum number of 10 parallel data streams. If the application is minimized to the taskbar, no data connection is active. DoorKeeper can be installed on any number of PCs.

3.2. Operating elements

The main window of the application offers all functions necessary for access control.



3.2.1. upper screen area



Minimize the program:

In the upper right corner of the window, you can usually close any program by clicking on the X button. The DoorKeeper, on the other hand, minimizes itself to the taskbar or system tray with these icons and waits for reactivation by the user or a call from the door stations.

Closing the program:

Right-clicking on the icon in the system tray of the taskbar opens a menu that allows you to reopen the application (open) or **close it completely** (close).



Currently without function

DE 09:30
05.12.2012

Tabs:

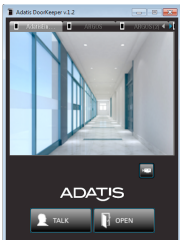
The tabs can be used to switch between the selected devices. The tabs can be moved, the order is saved so that the last selected tab is always active again and the desired order does not have to be set every time.

3.2.2. center screen area



Show and hide buttons:

By clicking on the button with the camera icon to the right below the video image, you can hide buttons so that only the "OPEN" and "TALK" buttons are visible at the end.



Pressing it again displays the other buttons and saves the size and position of the window.



Zoom:

Reducing and enlarging the image section



Pan:

With the control pad, the camera cut-out can be tilted or centered to the left, right, up or down.



Position buttons:

The position buttons Pos 1, Pos 2 and Pos 3 can be used to call up the image positions stored in the door station.

3.2.3. lower screen area



Open door:

By clicking the "OPEN" button, the electric door opener can be operated for an adjustable time. The button then returns to its initial state. This duration can be adjusted in the web browser of the door terminal.



Intercom:

To be able to talk to a person at the door, you should press the "TALK" button. Pressing it again deactivates this function and only the video image from in front of the door can be seen.



Access list:

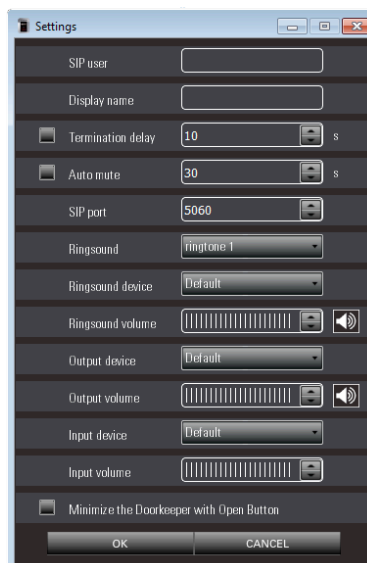
Clicking opens a new window with the list of all active FaceEntry® or TouchEntry® door terminals in the network (see [Access list](#)). Pure access readers (e. g. FaceEntry-XS) are not displayed because they do not have visitor communication.



Settings:

Clicking opens a new window "Settings" for configuring the options.

3.3. Settings



In the "Settings" dialog box, various settings can be made that make it easier to use the Adatis DoorKeeper or adapt the application to your personal preferences.



All settings must be saved with "OK". With "CANCEL" the last changes made are discarded.

SIP user Name under which the DoorKeeper registers itself at the door terminal. This identification allows each DoorKeeper to be addressed individually in the network.

Display name Name that appears on the door terminal while an audio connection is in place.

Termination delay

activated: The application minimizes itself automatically after the door is opened after an adjustable time. This is useful, for example, for users who mainly use the program minimized and only respond to incoming calls.

deactivated: The application is not minimized.

Auto mute

activated: After a configurable time has elapsed (at least 30 seconds), the "TALK" button automatically deactivates and only the video connection from the door to the PC is active.

This setting prevents the program from unintentionally maintaining the audio connection to the selected door because the user has activated this connection (that is, he has pressed the "TALK" button), but has forgotten to deactivate it again.


deactivated: The automatic termination of the "TALK" function is suspended and a "forgotten" audio connection remains.

SIP port The default port 5060 can be changed here if another program already uses this port.

Ringsound This setting allows you to select a ringtone from the list.

You can also import your own ringtone by copying an audio file of the type WAV (e. g. ringsound1.wav) into the folder "ringsounds" in the installation directory. This folder already contains the standard ringtones.

Ringsound device Selecting a loudspeaker or headset for **ringtone** when calling from a door

Ringsound volume Corresponding speaker volume. The selected ringtone is played via the  button.

Output device Selecting a speaker or headset for the **audio signal from the door**

Output volume Corresponding speaker volume. The speaker volume can be checked via the  button.

Input device Choosing a **microphone**

Input volume Microphone volume

Minimize the DoorKeeper with Open Button: If the DoorKeeper is always used minimized and this button is activated, the DoorKeeper minimizes itself automatically after pressing the "OPEN" button in case of a call from the door.



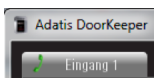
The settings depend on the setting options on the PC or laptop. If only one output channel is available, all audio signals are output over it and not split.

4. DoorKeeper as remote station

4.1. Incoming call from door terminal

If a contact is selected on a FaceEntry® or TouchEntry® visitor terminal (person or group) with a DoorKeeper call stored, all applications that have marked this door in their "ACCESS LIST" are called.

At the same time, a further SIP contact can of course also be called up (see the TouchEntry® or FaceEntry® manual at www.adatis.com for details).



The window will be brought to the foreground, if minimized, and depending on the settings, a ringtone will be played. In addition, two red alarm bells flash in the main window and a green handset on the tab of the calling terminal:



If a crossed-out handset appears in the tab next to the name, the user does not receive a call from the door since registration of the DoorKeeper at the door terminal was not successful, e. g. because the network connection was disconnected.

Another reason would be that 10 other DoorKeepers are already active at the door terminal. Only when one of the 10 DoorKeepers deregisters itself and thus releases this space, the DoorKeeper can register with the Doorterminal and calls can be received again from the door with the DoorKeeper.

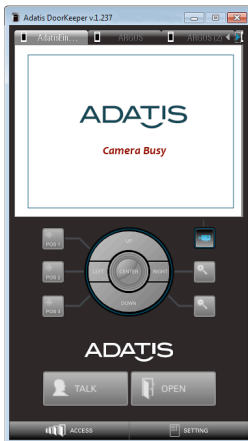
4.1.1. Door opening without call answering

If the DoorKeeper is in the foreground, the video image of the door is displayed and you can open the door directly with the "OPEN" button.

4.1.2. Door opening with call answering

If a DoorKeeper user accepts the call by pressing the "TALK" button, he receives the picture and sound connection to the door and can talk to the visitor e. g. via the microphone or a connected headset. The "OPEN" button can also be used to open the door.

For the other applications, the **"Camera busy"** screen appears and the ringtone is stopped:



The door station was then assigned exclusively to another user and only this user has a bi-directional audio connection.

In order to get a live image again, a new connection is attempted every 5 seconds to check whether the "TALK" connection is still active or whether the bi-directional audio connection has been terminated..

The Camera busy screen also appears when another remote station (e. g. Adatis Command-Center) has answered the call.

4.1.3. Terminate connection

The audio connection can be terminated by pressing the "TALK" button again, pressing the red "X" button to minimize or by changing the tab.

4.2. Call from DoorKeeper at the door terminal

If the application is in the foreground, the video image from the door is displayed.

Even without a call being made, you can now open the door using the "OPEN" button or establish an audio connection using the "TALK" button.

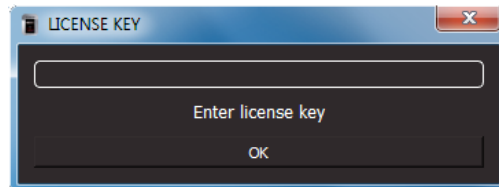
4.3. Display at the door terminal

A green handset and the name of the DoorKeeper are displayed on the door terminal as signs of an audio connection.

5. License

For demonstration purposes, a free 30-day trial version is available for Windows.

Afterwards, the input window for the license key appears automatically. You will receive this when you purchase a DoorKeeper license.



The key can also be entered directly by pressing the "L" key before the time limit has expired, after which the application is activated for an unlimited period of time.

The apps for iOS and Android are free of charge, i. e. no license key has to be entered.

6. Shortcuts

The following shortcuts are preset in the DoorKeeper to enable operation without a mouse:

ESC	Close active window or minimize main window
TAB	Select next tab
F1-F9	Choose tab no1 till no9 directly
1, 2, 3	Select position button 1, 2, 3
End	Show or hide buttons of the main window
Pg up, Pg down	Select next or previous tab
T, Space	Activate the TALK button or deactivate when pressed again.
O, Return, Enter	Open door
A, Ctrl, AltGr	Open Access list
S, Alt	Open Settings
H, I	Open the info window, e. g. for specifying the software version for support purposes
L	Open the window for entering the license key

7. Deinstallation

Uninstalling is done, as with other programs, via the control panel. Select the folder "Software" and then "Uninstall software".

All files are then deleted, including the ringtones and settings.

The additionally installed programs "Bonjour" and "Redistributable Package" remain available and may have to be uninstalled separately.