



**TOUCHENTRY®
FACEENTRY®**

Installation Manual

Revision 04/2013

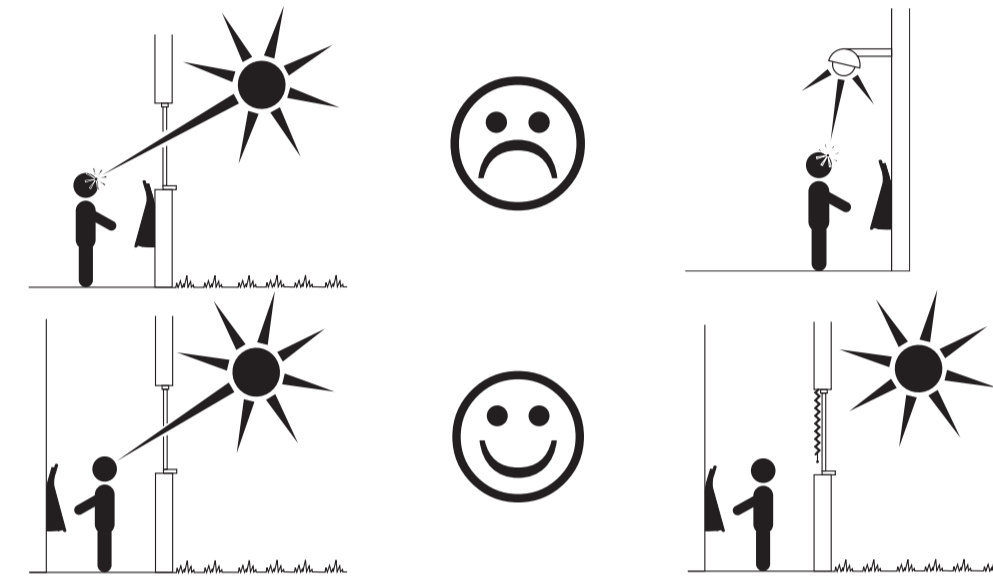
1 Preparations

1.1 Content of delivery

- FaceEntry or TouchEntry device
- bit for screwdriver in mounting kit
- terminal block
- Ethernet cable
- 3 RFID cards: green, red, grey
- this installation manual

1.2 Location

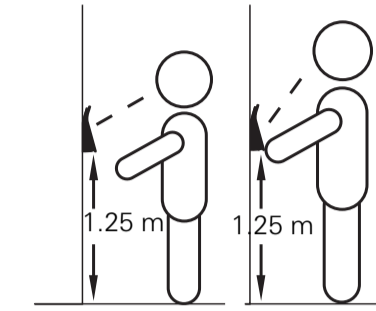
- This unit is for indoor use only!
- **FaceEntry only:** 3D face recognition, as is true for any biometric measurement, is sensitive to ambient light conditions. For best performance choose a suitable location (see following graphics).
Note that LED or fluorescent lighting as in energy-saving lamps are not critical in contrast to halogen or incandescent lamps or sunlight in general, which are critical.



Installation

1

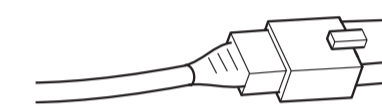
- Recommended mounting height is 1.25 m:



1.3 Interfaces

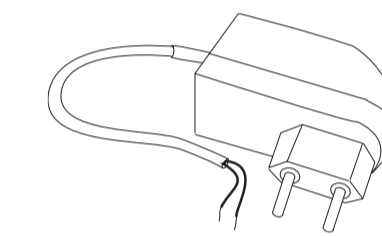
The described components are either part of the delivery or are available as accessories.

1.3.1 Ethernet, Power-over-Ethernet (PoE)



Connect Ethernet plug.
For Power-over-Ethernet supply use PoE-enabled network switch or PoE injector.

1.3.2 Local Power Supply



Power supply (24 V, 0.5 A, DC) via the terminal block (A1, B1). If a PoE connection exists, local power has priority, PoE is the fallback.

Installation

2

1.3.3 Terminal block

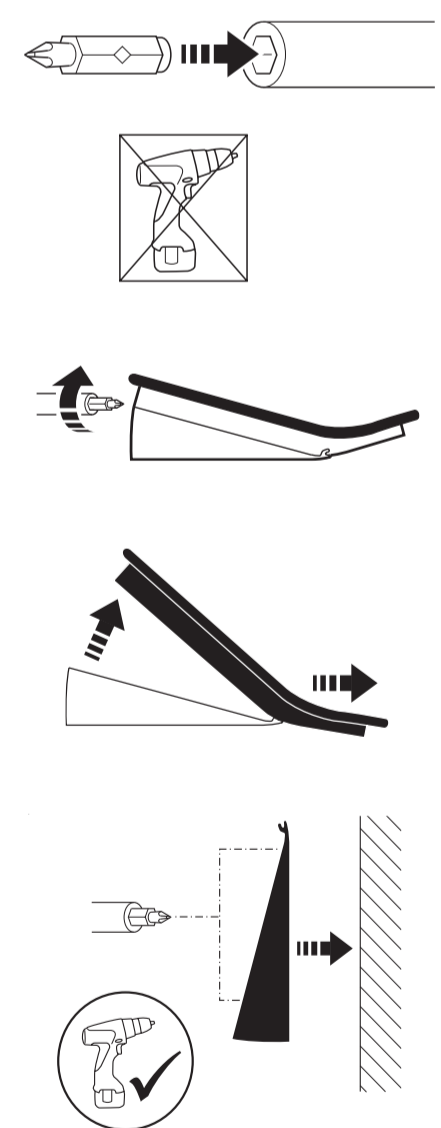
This image shows the pin arrangement for the terminal block.

Relay (normally closed)	B6	●	●	A6	Relay (normally open)
Relay COM	B5	●	●	A5	Trigger input 2
Ground for trigger inputs	B4	●	●	A4	Trigger input 1
RS232: Rx/D RS422: Tx+/+	B3	●	●	A3	RS232: RTS RS422: Tx+ RS485: Tx+/Rx+
RS232: CTS RS422: Rx-	B2	●	●	A2	RS232: Tx/D RS422: Tx- RS485: Tx-/Rx-
Ground for external power supply	B1	●	●	A1	+ 15-24 V DC external power supply

Installation

3

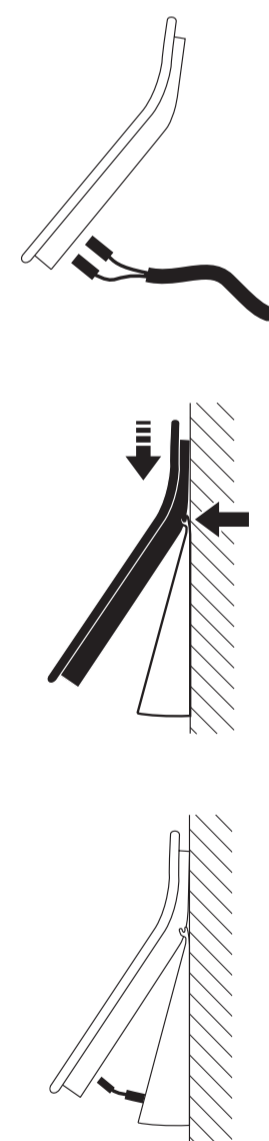
2 Wall mounting



- 1 Fit bit (content of delivery) into screwdriver.
- 2 Loosen screws that attach TouchEntry/FaceEntry to pod.
- 3 Pan out unit and unhinge it.
- 4 Screw pod to the wall.

Installation

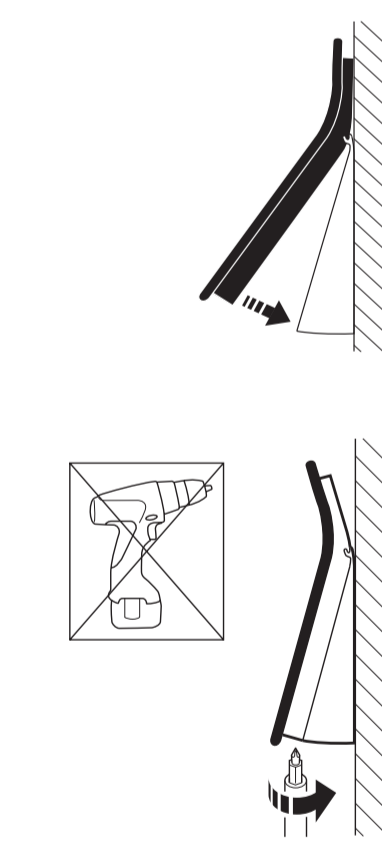
4



- 5 Plug in desired connections (see chap. 1.3).
- 6 Place unit on fulcrum pins.
- 7 Plug in anti-tamper contact if so equipped.

Installation

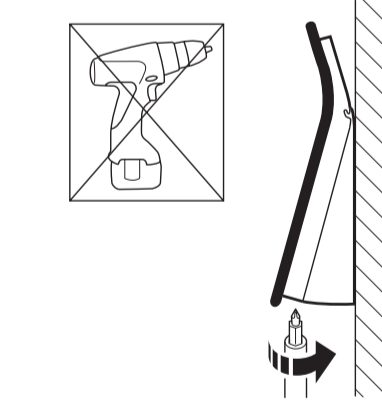
5



- 8 Swing down unit.

Installation

6



- 9 Insert screws that attach TouchEntry/FaceEntry to pod and lightly fasten them. Select the best inclination angle and tighten screws to lock position.

Installation

7

3 Configuration

You'll find the instructions for configuring and using TouchEntry/FaceEntry in the user manual on www.adatis.com (then choose "products").