

Quick installation

SIP IN GENERAL

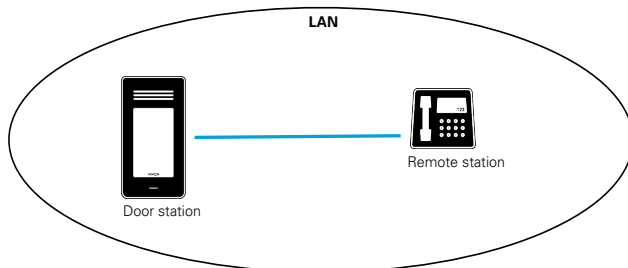
Version	1.000
Author	Sandra Gilge
Date	01/2018
Log	

Table of contents

1.	Direct call	3
2.	Internal registrar	3
2.1.	Remote station with DoorKeeper	3
2.1.1.	Basics	3
2.1.2.	Broadcast call	4
2.1.3.	Phone call	4
2.2.	Remote station with IP phone	4
2.2.1.	Basics	4
2.2.2.	Phone call	4
3.	Integration into a telephone system	5
3.1.	Basics	5
3.2.	Phone call	5
3.3.	Fritz!Box	5
4.	Integration of the Adatis SIP server	6
5.	Overview syntax	6

1. Direct call

Many IP phones such as Grandstream or Snom can be called directly from their IP address. This IP address is then entered as the SIP URI of a contact.

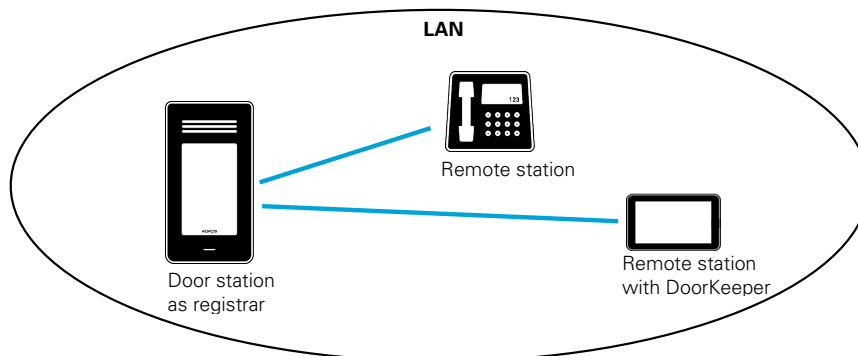


To do this, a person or group must be created in the terminal that contains the IP address of the telephone as phone number. If you select this contact on the terminal display and establish a call, it rings on the IP phone.

At the same time, you can also call the terminal from the IP phone, e. g. to view the situation at the door. To do this, select the IP address of the terminal on the IP phone ("." is entered using the * key)

2. Internal registrar

Many SIP softphones require the configuration of at least one SIP server. In this case, the door station can be configured as a SIP server. The SIP user name is freely selectable and must NOT be configured in the door station.



2.1. Remote station with DoorKeeper

2.1.1. Basics

The DoorKeeper implementations (PC and App) use Bonjour/Zeroconf to search for existing door stations in the local network. These door stations can then be added to "observation". The DoorKeeper then logs on to the door station as a SIP counterpart (SIP: REGISTER). The

door stations serve as SIP servers and the DoorKeeper as SIP user agents (UA) logged on to this SIP Server.

The name with which the DoorKeeper logs on is configurable as of PC DoorKeeper version 1.235 and as of app version 2.1.0. The name is freely selectable and must NOT be configured at the door station.

2.1.2. Broadcast call

If a contact of the door station has stored the telephone number **DK***, all remote stations are called which are registered as SIP-UA at this door.

2.1.3. Phone call

If you want to call a certain DoorKeeper counterpart, enter the following SIP-URI as telephone number at the contact: **@user name**

The SIP user name can be found in the DoorKeeper in the menu "Settings". There it can be adjusted individually.



The door stations serve both as registrar servers and SIP-UA. However, they do not represent a SIP proxy server. The doorstation does not forward calls from external UAs to other UAs.

2.2. Remote station with IP phone

2.2.1. Basics

Just like the DoorKeeper application, an IP phone can register with the DoorKeeper terminal. For this purpose, the IP address of the terminal must be stored in the IP telephone.

Further settings can be found in the manual of your IP phone.

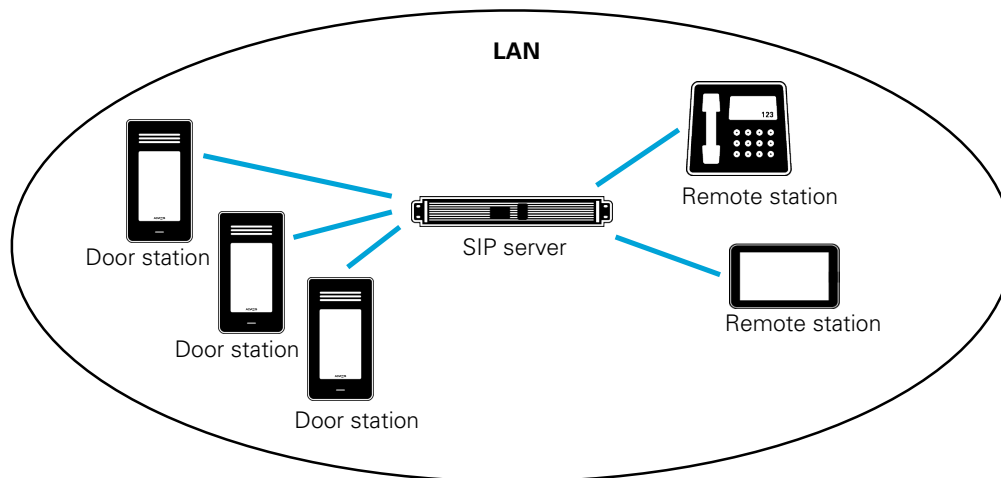
2.2.2. Phone call

For this purpose, a contact must be created in the terminal that contains the SIP user ID of the telephone as phone number: **@user name**

If you select this contact on the terminal display and establish a call, it rings on the IP phone.

3. Integration into a telephone system

Larger systems usually use a SIP server or an IP telephone system.



3.1. Basics

In principle, the door station and the remote station must be set up on the SIP server.

If the door station shall make the calls via this SIP server, the WEB-GUI must be configured on the page SIP configuration. There, the data of the SIP server can be entered so that the door station can register with the SIP server. Likewise, the remote station e. g. an IP phone or a device with DoorKeeper must also register on the server.

3.2. Phone call

For this purpose, a contact must be created in the terminal that uses the SIP user ID of the remote station: **user name@**

If you select this contact on the terminal display and establish a call, it rings at the corresponding remote station.

3.3. Fritz!Box

In the private area, a Fritz!box can be used as a SIP server, e. g. 7390 or 7490. This has the advantage that any phones (including mobile phones and DECT phones) can be reached via the telephone number.

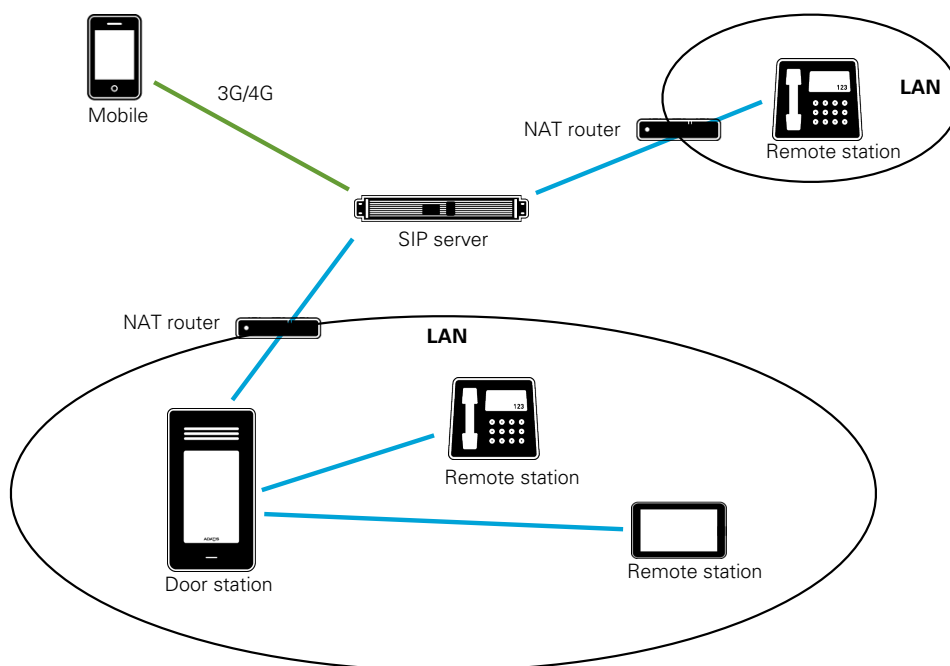
However, the Fritz!box does not yet support SIP video, not even for SIP counterparts.

Further details can be found on our homepage and on the homepage of Fritz!box on the topic of furnishing IP telephone or door intercom.

4. Integration of the Adatis SIP server

If you want to integrate remote stations outside the local area network, an external SIP server is required. For this purpose, Adatis offers accounts on the Adatis SIP server, which can be ordered from Adatis. Also for IOS devices the integration of the Adatis SIP server is mandatory, because push notifications have to be sent to the DoorKeeper IOS App to be able to provide the service.

See the Adatis SIP Server Quick Start Guide for more details.



5. Overview syntax

It is no longer necessary to enter complete SIP URIs, but there is a special syntax for calls via an external SIP server or the internal registrar. This means that the URIs no longer have to be changed individually if the SIP domain or IP address of the terminal changes.

As before, several URIs can be entered for one person, separated by a semicolon.

	syntax	corresponds
IP direct call	192.168.2.13	192.168.2.13
Call via SIP server	User name@sipdomain	User name@sipdomain
Call via adjusted SIP Server	User name@	User name@sipdomain
Call via internal registrar	@user name	User name@<ip-doorstation>
Broadcast call of all devices, which are registered at the internal registrar	DK*	

